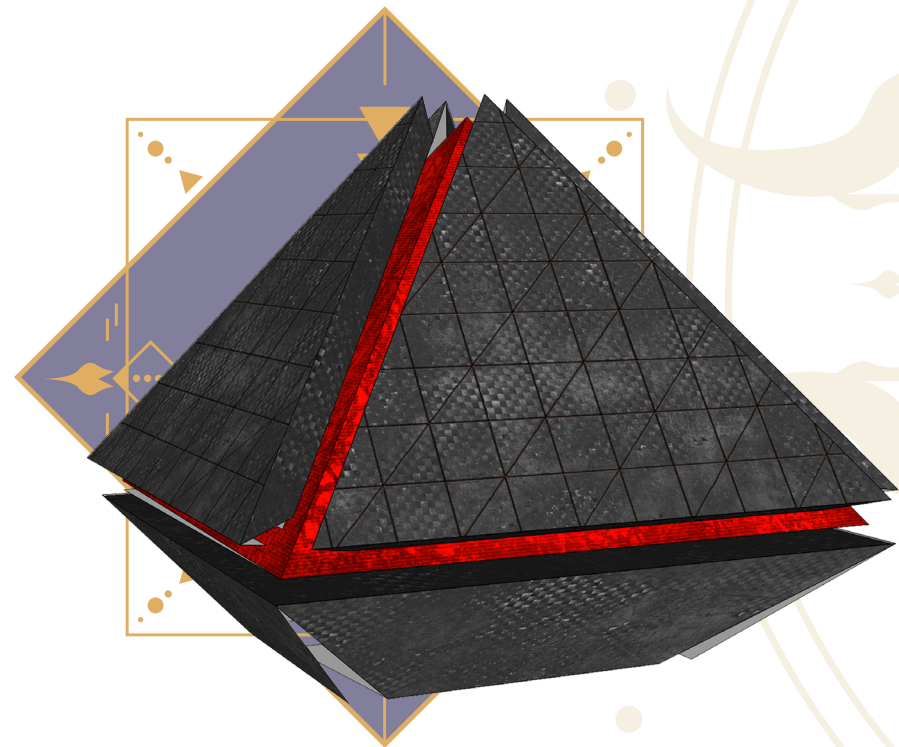


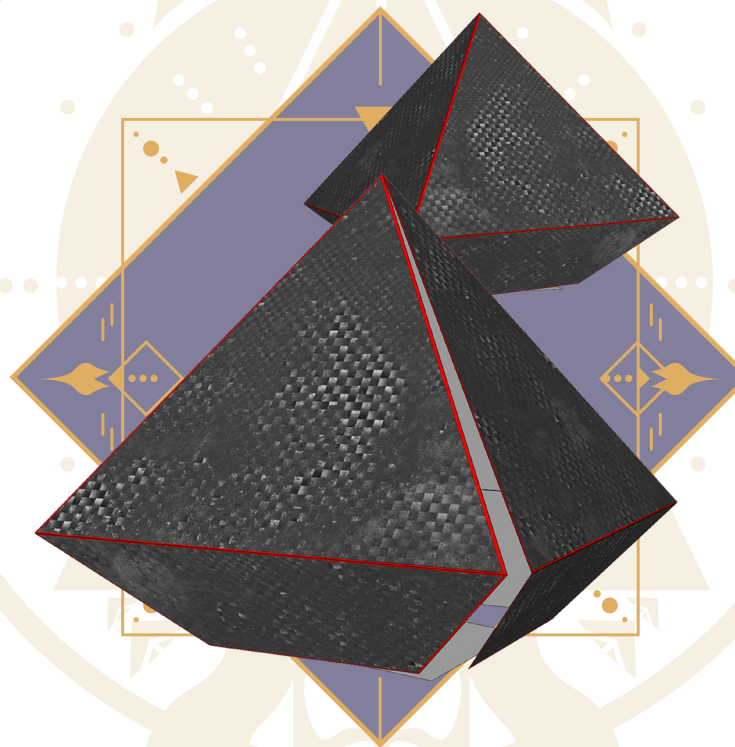
Festival of the Lost

PAPERCRAFT DESK TOYS



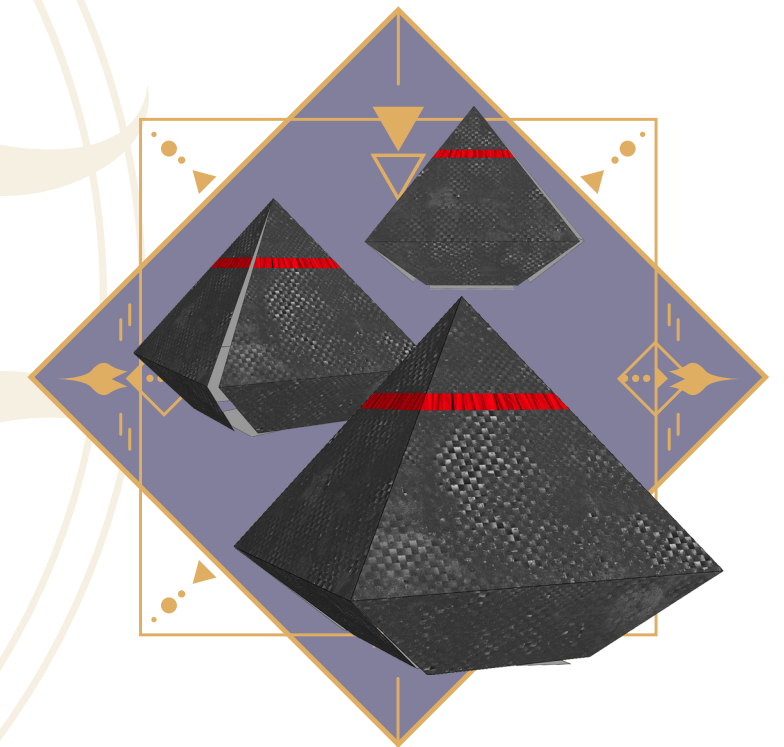
SIVA Node L

DSK - 1601



SIVA Node M

DSK - 1602



SIVA Node S

DSK - 1603

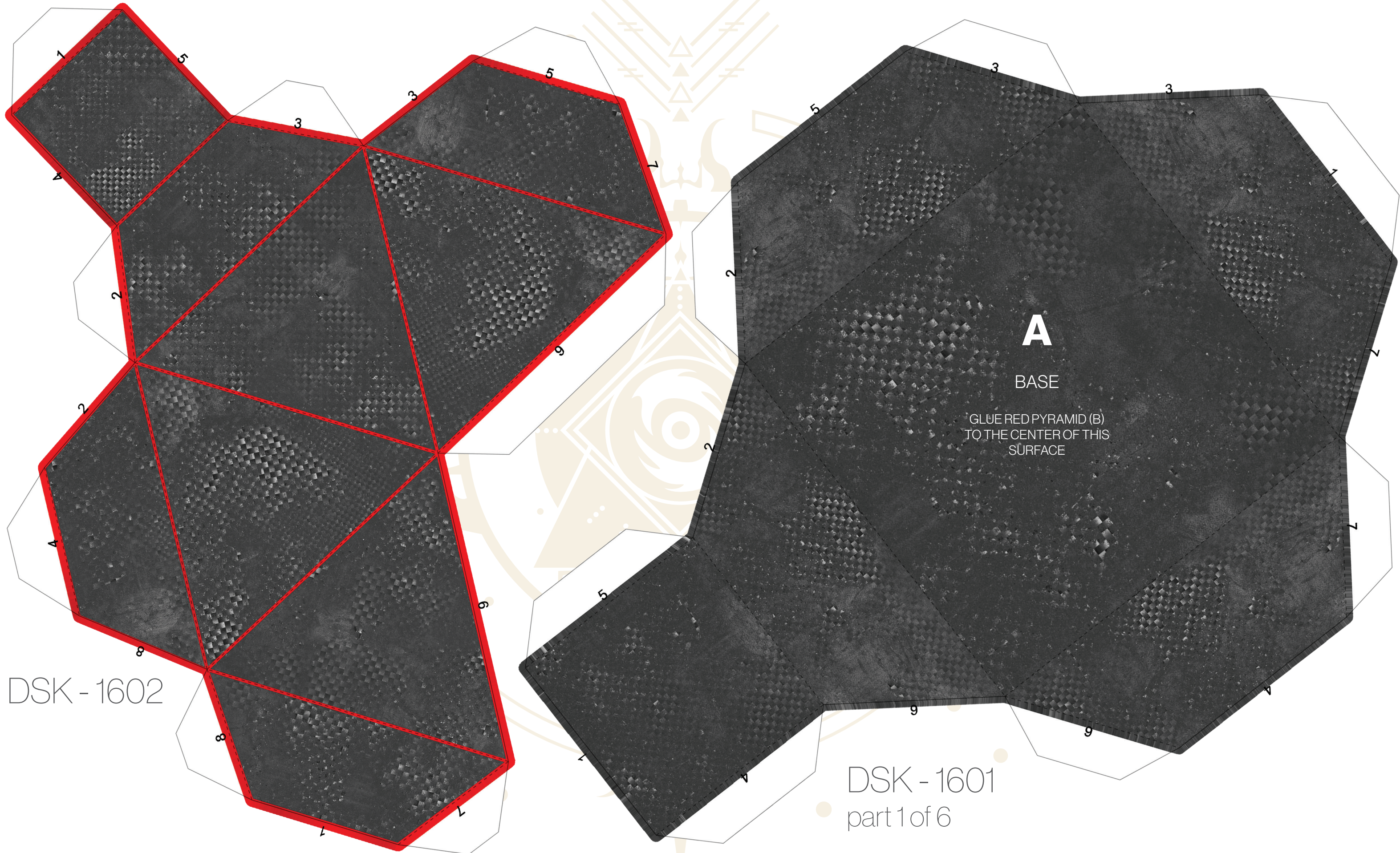
INCLUDES **6** SIVA NODES:



TOOLS: Paper glue (required)
Craft knife or scissors
Metal ruler
Cutting mat

TIPS: Recommend printing on 11x17 cardstock paper. // For cutting, use a craft knife and a metal straight edge over a cutting mat or board for best results. // When folding a flap, use a straight edge (like a ruler or drafting triangle) to crease the paper. // For a crisper shape, lightly score the folding edges.

NOTICE: THESE TABLE-TOP DECORATIONS ARE PROVIDED "AS IS" WITHOUT WARRANTY OF ANY KIND AND ARE NOT INTENDED FOR USE BY CHILDREN UNDER 12. NOT FOR RESALE.



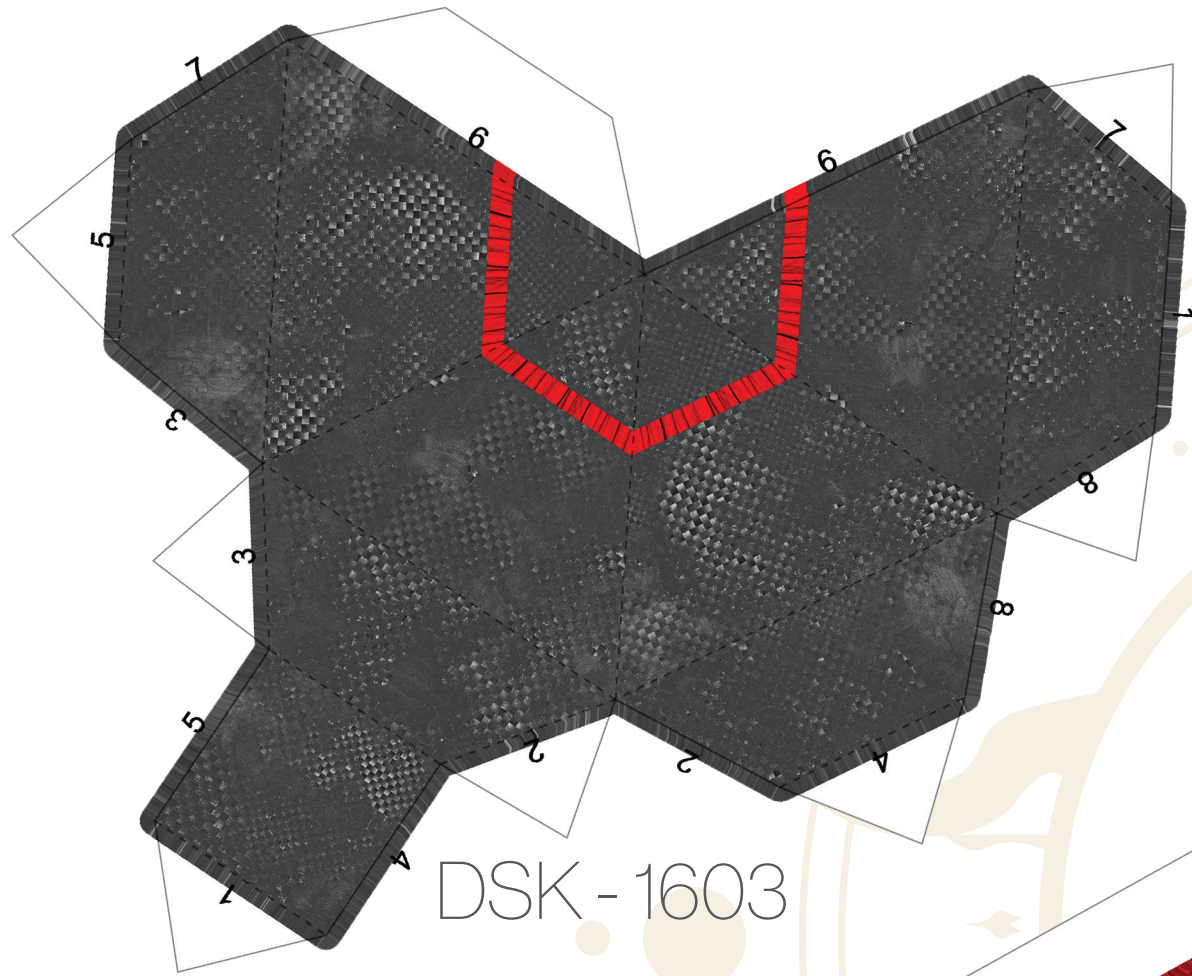
A

BASE

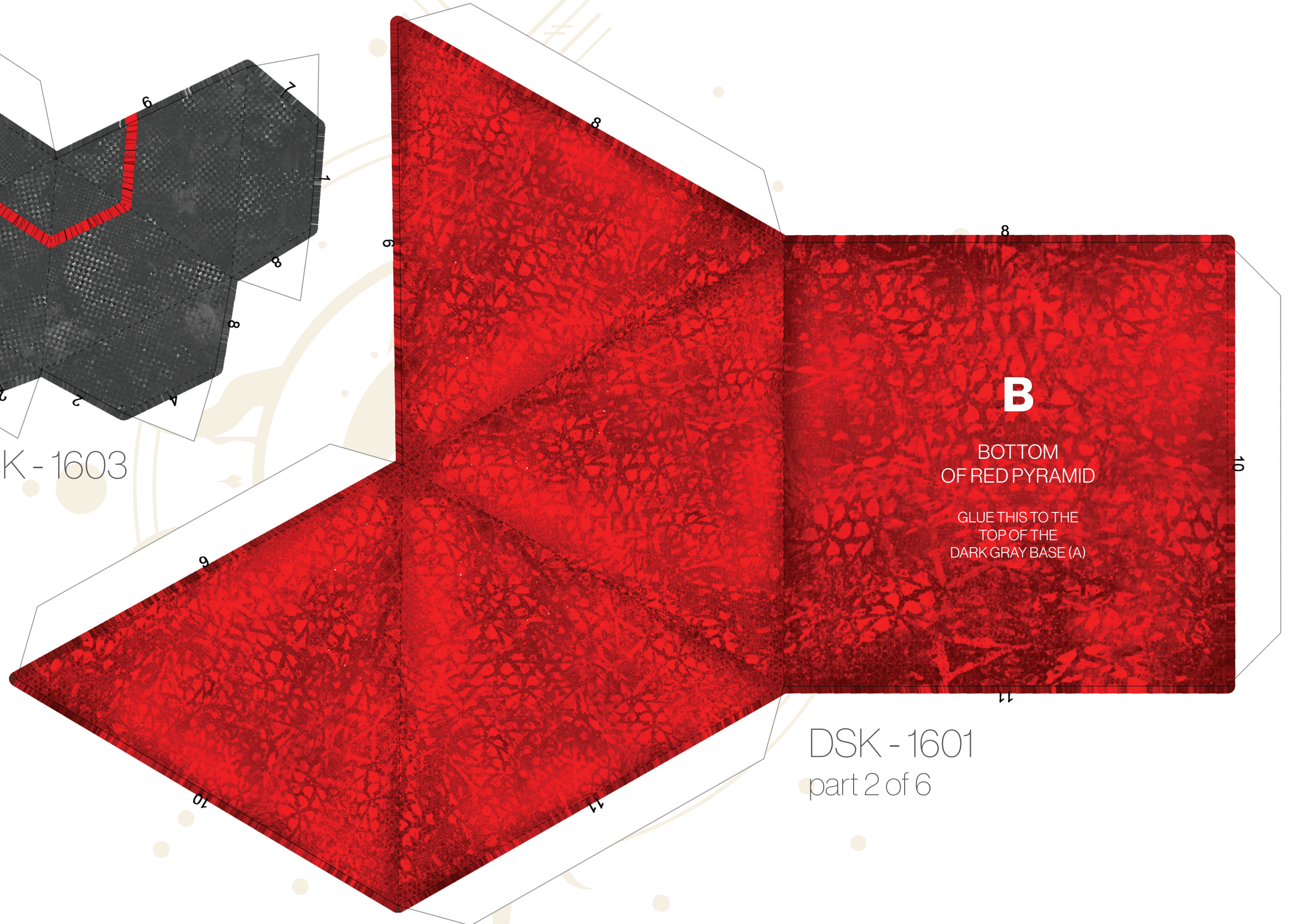
GLUE RED PYRAMID (B)
TO THE CENTER OF THIS
SURFACE

DSK - 1602

DSK - 1601
part 1 of 6

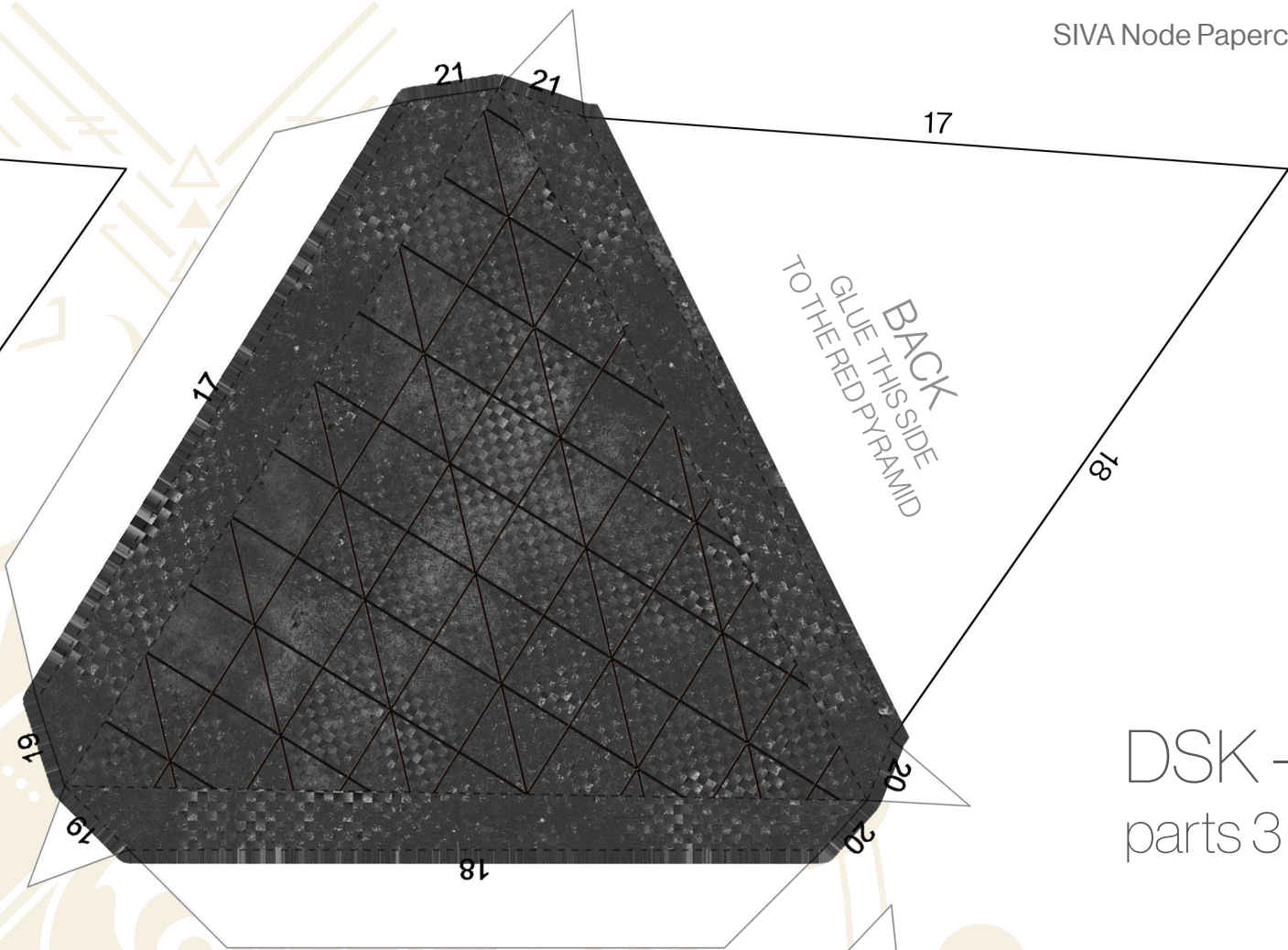
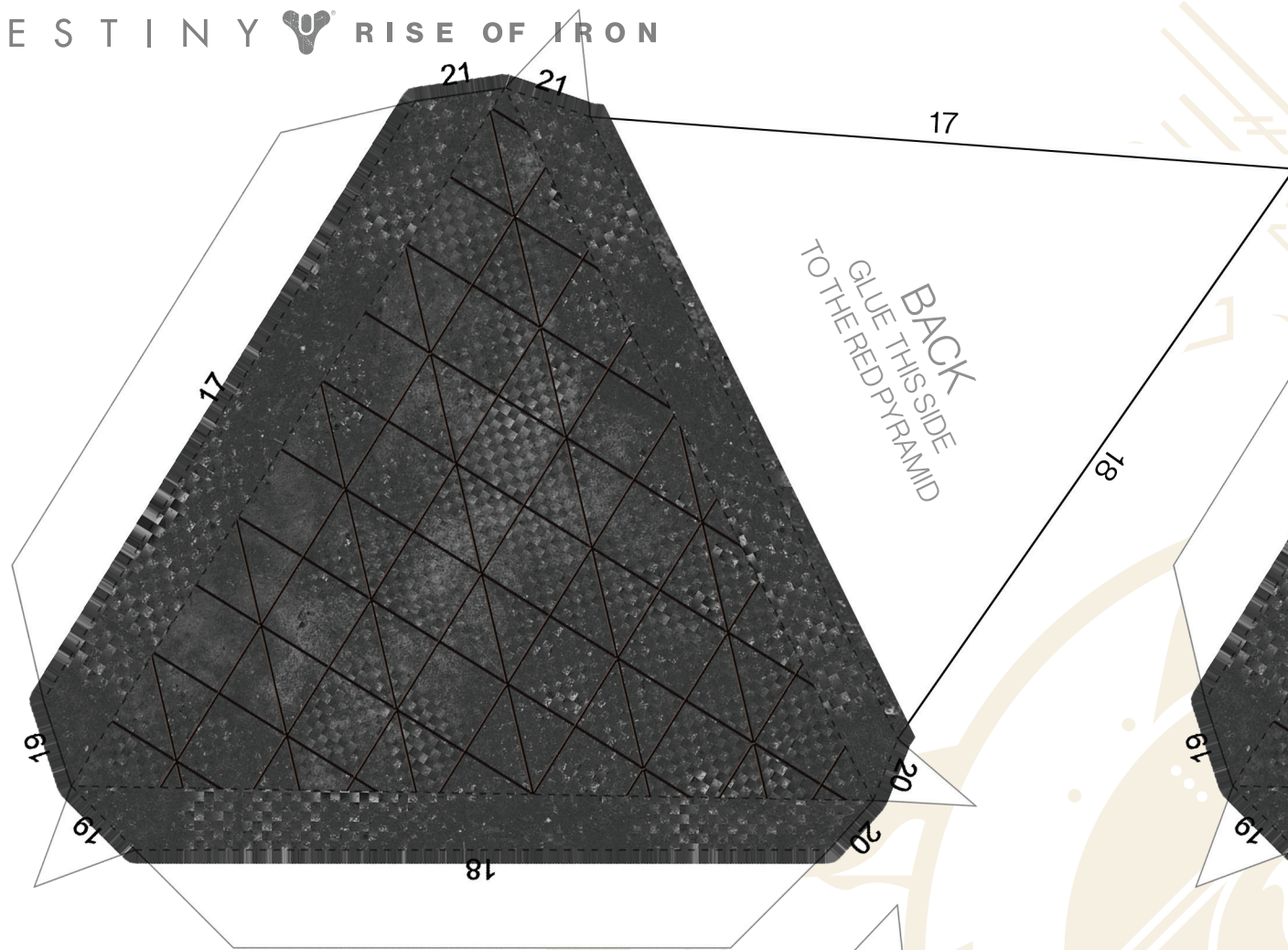


DSK - 1603



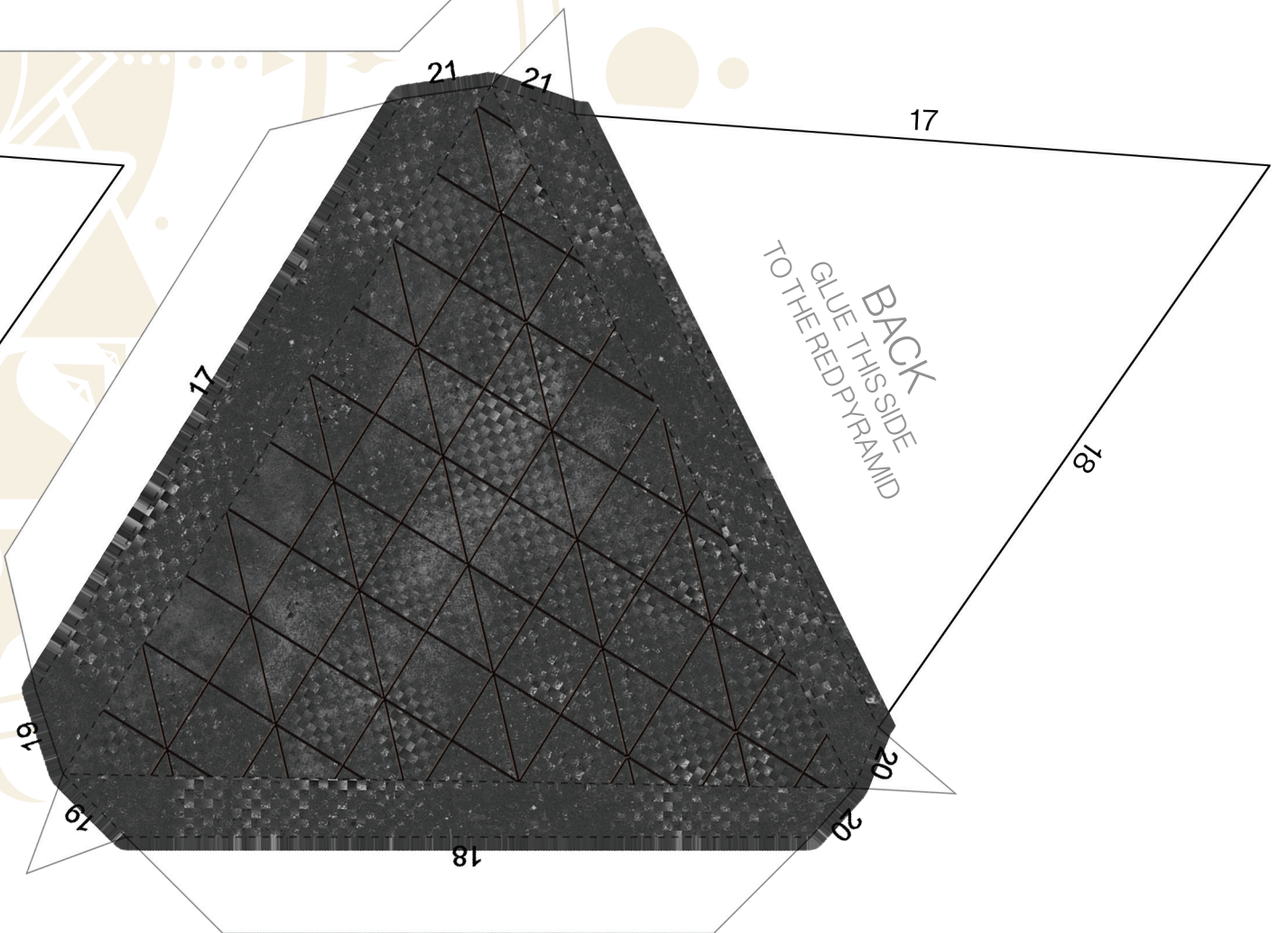
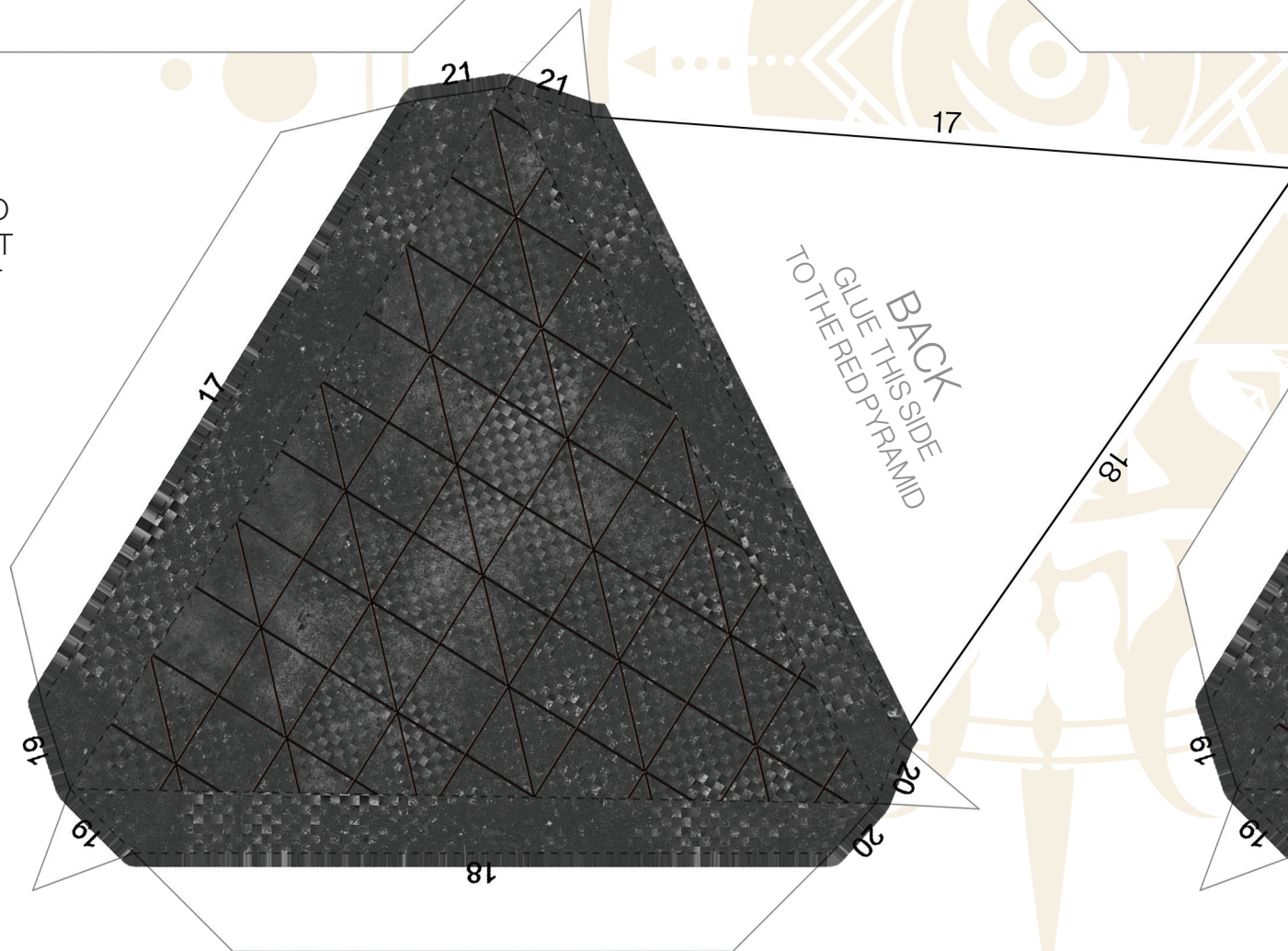
B
BOTTOM
OF RED PYRAMID
GLUE THIS TO THE
TOP OF THE
DARK GRAY BASE (A)

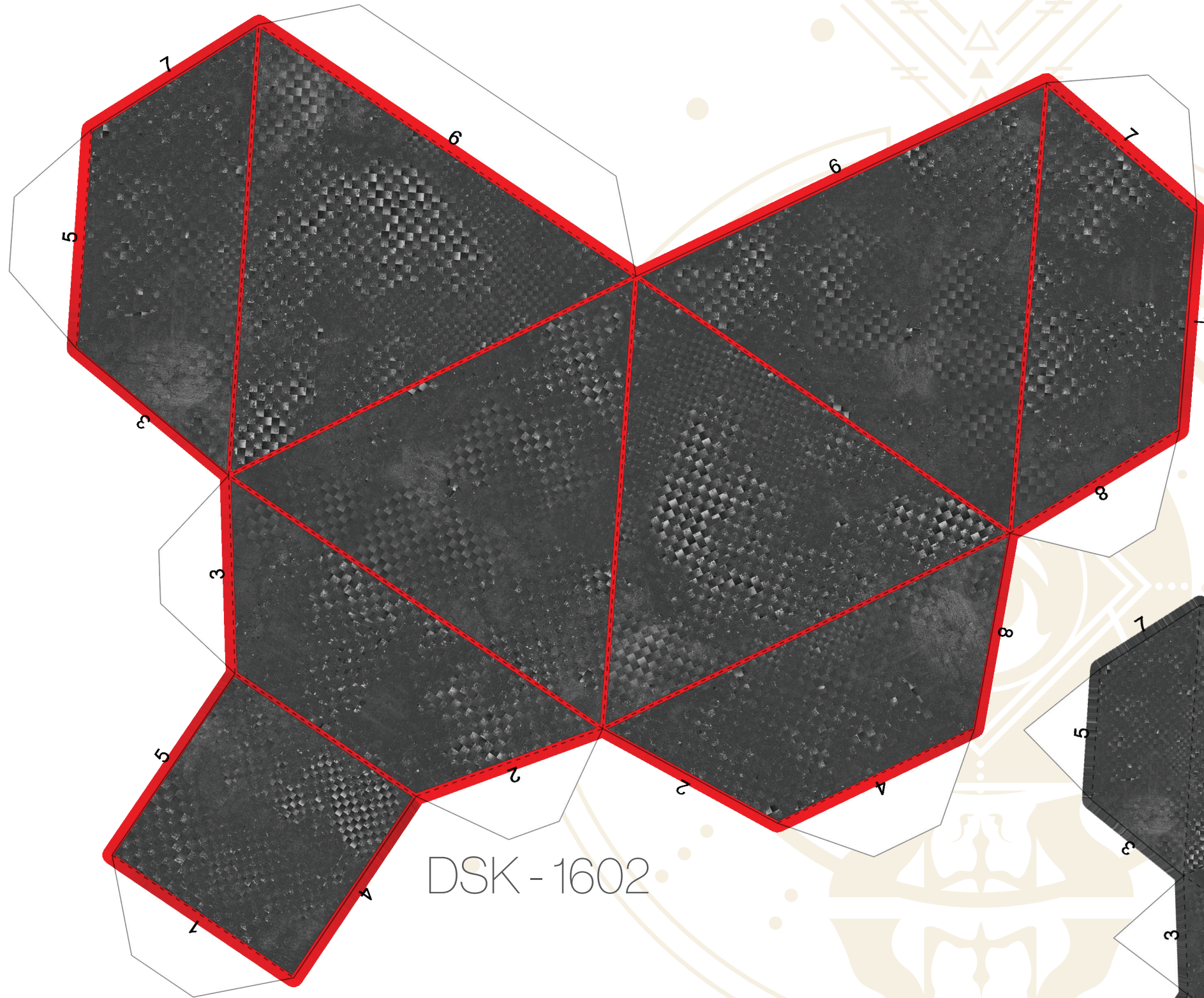
DSK - 1601
part 2 of 6



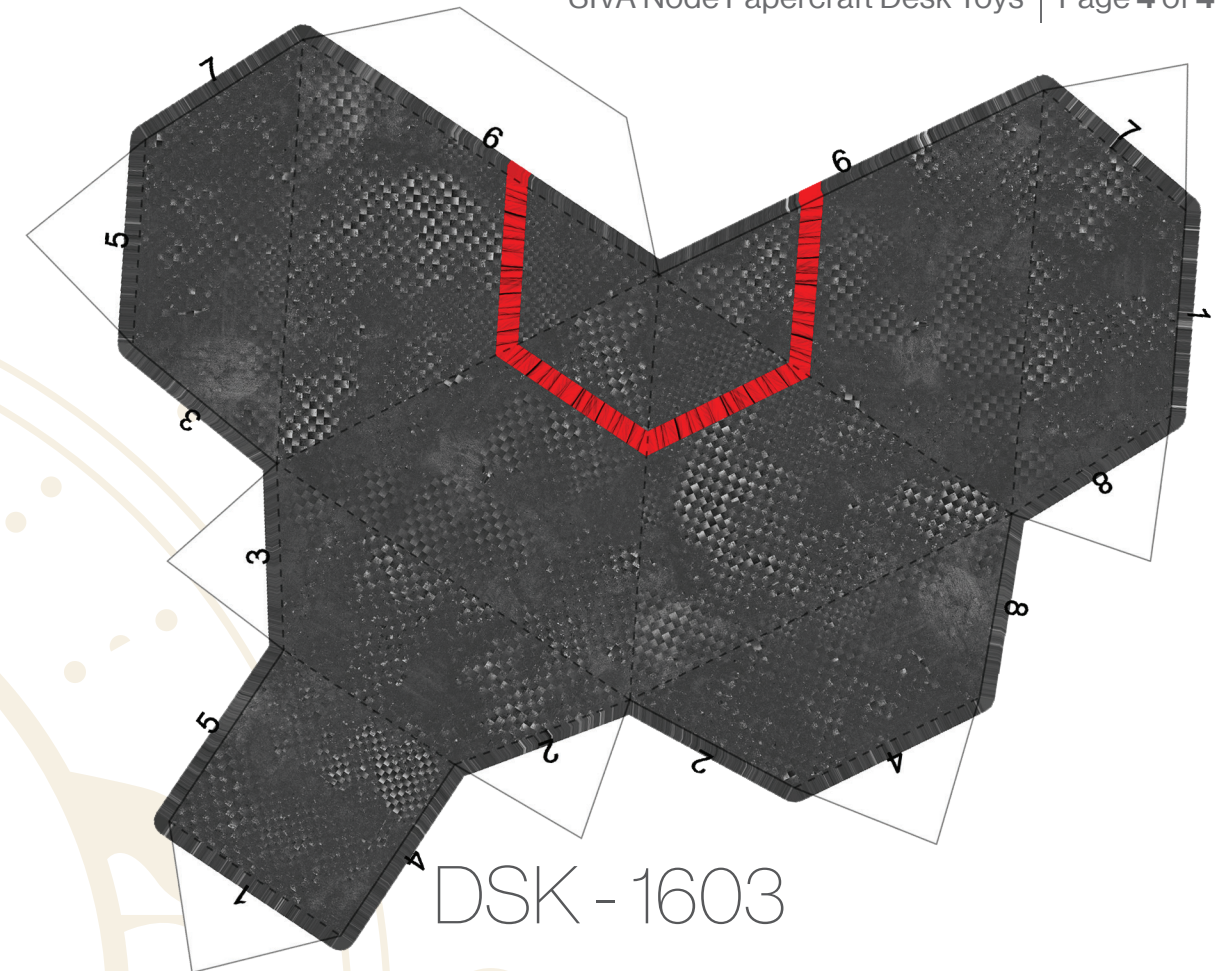
DSK - 1601
parts 3 to 6

PLEASE REFER TO
THE COVER SHEET
FOR PLACEMENT

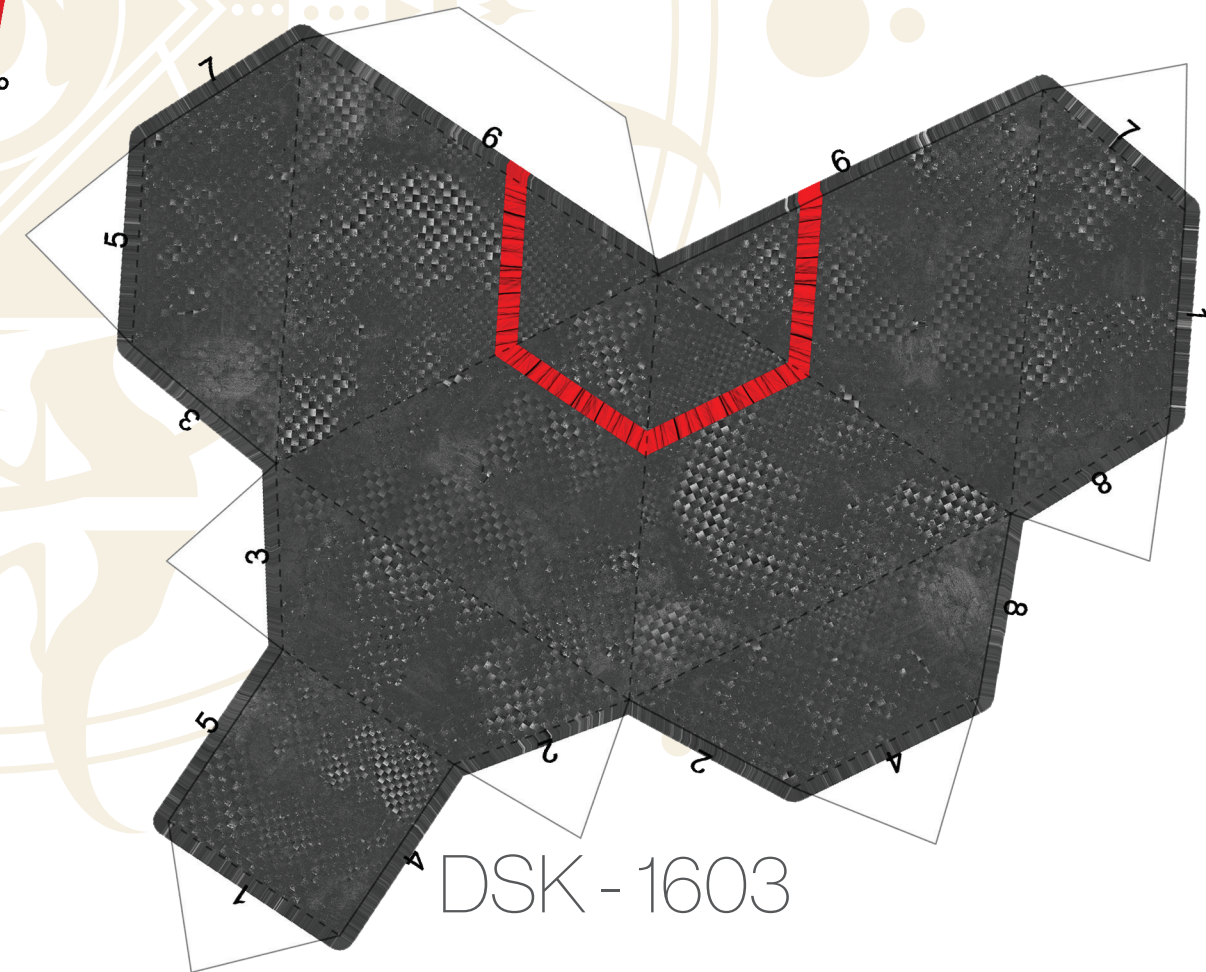




DSK - 1602



DSK - 1603



DSK - 1603